

Flanged Joint Fittings Butt Fusion Fittings HDPE 100 - PN 16



Elbow 90°

Size (mm)	Code
20	123002016
25	123002516
32	123003216
40	123004016
50	123005016
63	123006316
75	123007516
90	123009016
110	123011016
125	123012516
160	123016016
180	123018016
200	123020016
225	123022516
250	123025016
315	123031516
355	123035516
400	123040016
450	123045016
500	123050016



Equal Tee 90°

Size (mm)	Code
20	123202016
25	123202516
32	123203216
40	123204016
50	123205016
63	123206316
75	123207516
90	123209016
110	123211016
125	123212516
140	123214016
160	123216016
180	123218016
200	123220016
225	123222516
250	123225016
280	123228016
315	123231516
355	123235516
400	123240016
450	123245016
500	123250016



Reduced Tee 90°

Size (mm)	Code
63*40	123606304016
63*50	123606305016
75*40	123607504016
75*50	123607505016
75*63	123607506316
90*63	123609006316
90*75	123609007516
110*63	123611006316
110*75	123611007516
110*90	123611009016
125*63	123612506316
125*75	123612507516
125*90	123612509016
125*110	123612511016
160*63	123616006316
160*75	123616007516
160*90	123616009016
160*110	123616011016
200*63	123620006316
200*75	123620007516
200*90	123620009016
200*110	123620011016
200*160	123620016016
250*90	123625009016
250*110	123625011016
250*125	123625012516
250*160	123625016016
315*90	123631509016
315*110	123631511016
315*125	123631512516
315*160	123631516016
315*200	123631520016
355*110	123635511016
355*160	123635516016
355*200	123635520016
355*250	123635525016
400*160	123640016016
400*200	123640020016
400*250	123640025016



Elbow 30 / 22.5 / 11.25°

Size (mm)	Code
50	1134050
63	1134063
75	1134075
90	1134090
110	1134110
125	1134125
160	1134160
180	1134180
200	1134200
225	1134225
250	1134250
315	1134315
355	1134355
400	1134400



Elbow 45°

Size (mm)	Code
25	123102516
32	123103216
40	123104016
50	123105016
63	123106316
75	123107516
90	123109016
110	123111016
125	123112516
160	123116016
180	123118016
200	123120016
225	123122516
250	123125016
315	123131516
355	123135516
400	123140016



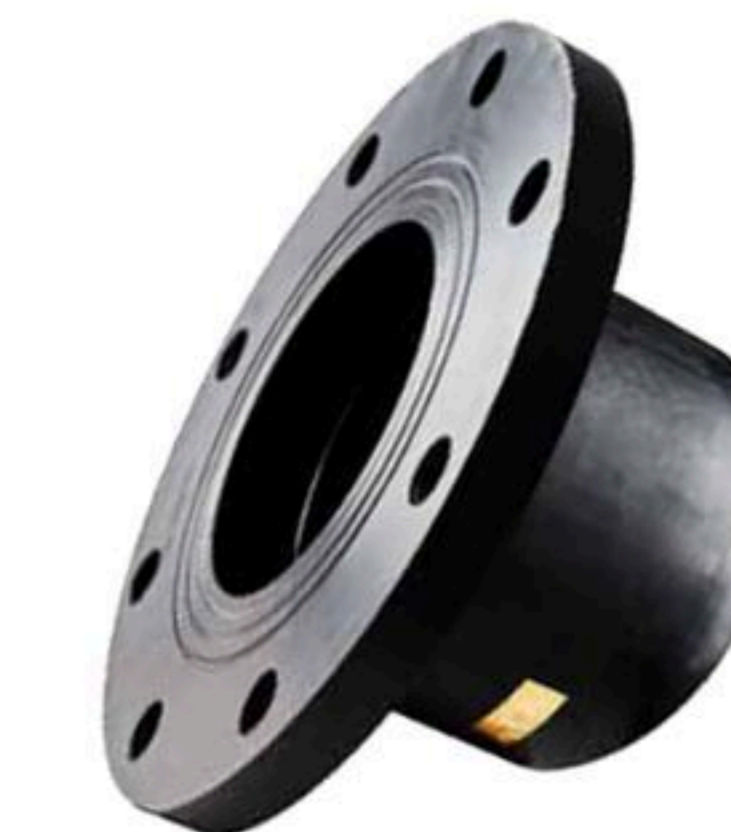
90 Four way degree polyethylene welding

Size (mm)	Code
90	123709016
110	123711016
125	123712516
160	123716016
200	123720016
250	123725016
315	123731516



Steel Core Hole Flange

Size (mm)	Code
63	128206316
75	128207516
90	128209016
110	128211016
125	128212516
160	128216016
200	128220016
225	128222516
250	128225016
315	128231516
355	128235516
400	128240016



Flat Face Flanged Cap

Size (mm)	Code
63	122806316
75	122807516
90	122809016
110	122811016
125	122812516
160	122816016
200	122820016

In addition to other specifications, this product is also available in pressure ratings PN 6, PN 10, and PN 25

